



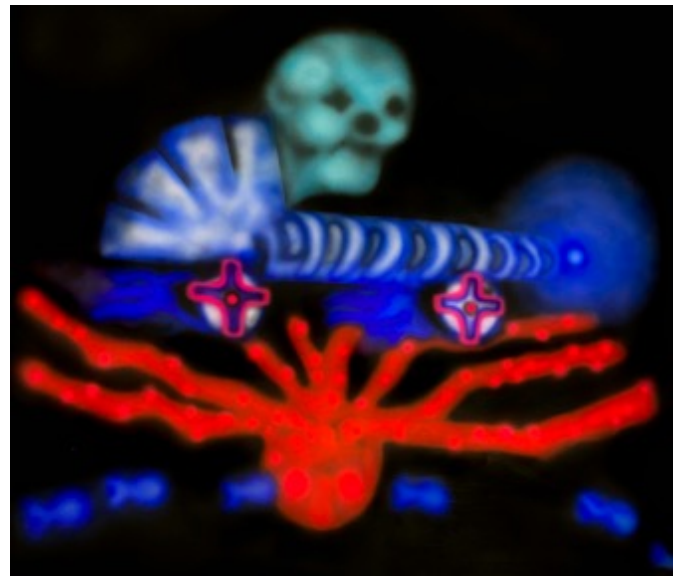
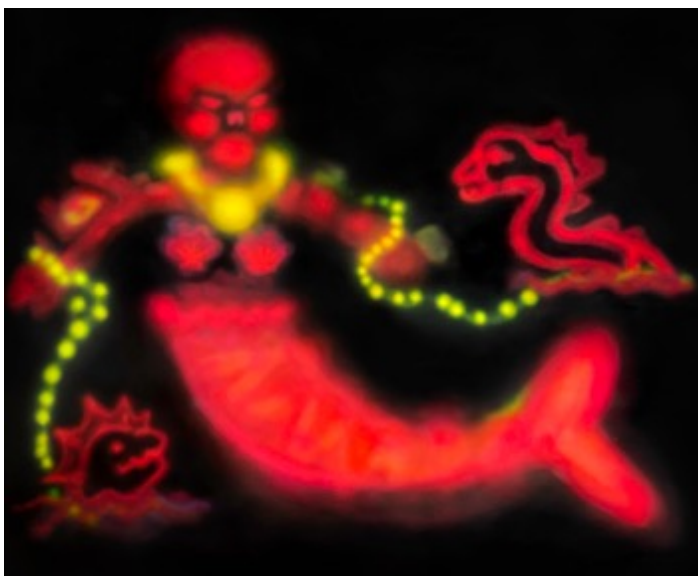
## DEAD SEA

A collection of new works by **Christina Allan**

*On view at Alchemy Gallery September 7 – October 8*

After her sold out debut in [Alchemy Gallery's](#) June group exhibition, *fem*, the gallery is proud to present *DEAD SEA*, a solo show featuring the vibrant, fantastical works of [Christina Allan](#), opening on **September 7th**. This show builds on a recurring character in Allan's work – the skeleton motif – for a series of paintings that unveil a world of spiritual creatures lurking in the depths of the deep sea which exude a bioluminescent-quality, created by Allan's energetic painting technique that blends bold and hazy spray-painted and airbrushed forms. The glowing, vivid lifeforms and surrealistic elements captured by Allan, illuminate a dark dream-like ocean atmosphere and underworld in *DEAD SEA*, which will be on view from **September 7th through October 8th**.

*DEAD SEA* was born from a personal and collective curiosity about the mysterious nature of the ocean, much of which remains undiscovered and unexplored to this day. It's the home for some of the most ancient creatures on the planet capable of surviving in extreme environments, and some producing the only light found in deep depths. It's a dark world, populated with alien-like habitats and creatures able to adapt to near-darkness with large eyes and peculiar camouflage. The curiosity for the unknown, a recurring theme in Allan's work, has been a topic explored throughout history. The sea, in particular, has been feared and fantasized, through avenues including ancient folk tales of deep sea creatures to horror films depicting otherworldly, frightening beings.



*Siren Captured* (left), *Shell Rider* (right)

As such, this exhibition communicates the awe, sublime, and sense of greatness that the sea and its inhabitants evoke (known and unknown), and the mysteries and secrets that nature holds. For Allan, the series revisits her childhood and present-day fascination with sea life and fantasy, and creates a world where both lightness and darkness, and good and evil thrive. It imagines a place in which spiritual, grotesque and fantastical creatures might exist and evolve, and the power dynamics and structures of such a world.

In *DEAD SEA*, creatures float in a realm of darkness and glow off the canvas with electric hues. More specifically, in her painting, *Shell Rider*, a skeletal creature rides a surrealistic seashell car that illuminates its way through the darkness, and other sea life, with an electric blue light, while in *Siren Captured* the scene depicts a skeletal siren hybrid wearing a glowing medallion being attacked and held captive by eel-like monsters with fluorescent gold chains. The series of paintings portrays an imperfect world filled with bliss, power, survival, conflict and terror.

As for her process, every artwork in the exhibition was originally composed by Allan as a digital painting in Photoshop, then translated into larger scaled works on canvas using an airbrush, spray paint, and acrylic paint. The result is a series that recreates a digital aesthetic and presents airbrushed forms with a hazy, energetic glow that mimics bioluminescent light.

*DEAD SEA* opens on **Wednesday, September 7th** with a private preview from 4-6 pm, followed by an opening reception from 6- 8pm, and will be available for public viewing during Alchemy Gallery's open hours: Wednesday through Saturday, noon to 6pm daily, through October 8th, and by private appointment.



*Sea Nymphs*, 2022, acrylic and spray on canvas, 58x55 inches

### **About Christina Allan:**

[Christina Allan](#) (b. 1995, Toronto) received her BFA in Painting from Parsons the New School for Design in 2017. Known for her highly expressive and vibrant paintings, Allan's work expresses profound aspects of the human experience, including the classic existential struggle. From dramatic mythical scenes to introspective psychological portraits, her work populates a world of fantastical creatures within dream-like natural landscapes. Similar to how ancient mythological deities served as answers to the mysteries of a meaningless world and universe, Allan's paintings present an in-between space and state – an escape from an absurd quotidian existence. Her paintings can be found in private collections throughout the United States, Canada, and Europe.

### **About Alchemy Gallery:**

Alchemy is a process of creation and transformation; the evolution of turning the ordinary into the extraordinary. Alchemy Gallery's mission is to celebrate that process artistically, by fostering the development of artists at all levels, in all mediums, and championing their art with the right audiences of quality collectors. The Gallery's 1000sq. feet footprint in New York's Lower East Side gives art the room it needs to breathe and provides the optimal environment for collectors to discover, explore and acquire. With its founders bringing a mature collectorship from their combined 25 years of art advisory, Alchemy Gallery is a young space with an established expertise and industry knowledge guiding it.

Alchemy Gallery  
55 Delancey Street  
New York, NY

For updates and more information on Alchemy Gallery, please visit: <https://www.alchemy-gallery.com/>

### **Media Contact:**

Sarah Usher  
SU PR, Inc.  
[sarah@sarahusherpr.com](mailto:sarah@sarahusherpr.com)